



Italia

CERTIFICATO

CERTIFICATE

Direttiva Macchine 2006/42/CE All. IX- Esame CE del tipo di apparecchi di sollevamento di persone o di persone e cose con pericolo di caduta verticale superiore a 3 metri (rif. Allegato IV – 17)

Machinery Directive 2006/42/EC Annex. IX - EC type-examination certificate of devices for the lifting of persons or of persons and goods involving a hazard of falling from a vertical height of more than three metres (Ref. Annex IV – 17)

Certificato No.: TÜV IT 0948 11 MAC 0022/2 B
Certificate No.:

Nome ed indirizzo del fabbricante: THYSSENKRUPP ENCASA S.r.l.
Name and address of manufacturer: Via Cannizzaro - Frazione Ospedaletto 2
 56124 PISA (PI) - ITALIA

Prodotto: Piattaforma elevatrice destinata al trasporto di persone con mobilità ridotta
Product: Vertical lifting platform intended for use by persons with impaired mobility

Modello/tipo: OR04
Model/type: (denominazioni commerciali: ORION, HE30, HE50)

Rapporto di prova: TR 0948 MAC 0064 B, 05/12/2014
Test report:

Norme di riferimento: Direttiva Macchine 2006/42/CE
Reference Standards: EN 81-41: 2010

Si certifica, quale organismo notificato n.0948 che la piattaforma elevatrice nel campo di applicazione riportato nell'allegato al presente certificato soddisfa i requisiti della direttiva:

We herewith certify, as per Notified Body no.0948, that the lifting platform for the respective scope of application stated in the annex to this EC type-examination certificate meets the requirements of the Directive:

2006/42/CE

Data prima emissione: 10/05/2011
First issue data:

Revisione del: 18/12/2014
Revision:

Data di scadenza: 09/05/2016
Expiry date:



SGQ N° 049A SSI N° 005G PRD N° 061B
 SGA N° 018D ITX N° 001L ISP N° 057E
 SCR N° 009F PRS N° 077C LAB N° 0076

Membro degli Accordi di Mutuo Riconoscimento EA, IAF e ILAC
 Signatory of EA, IAF and ILAC Mutual Recognition Agreements



TÜV Italia S.r.l.
Organismo notificato N° 0948
Notified Body, Identification N° 0948

Dr. Gennaro Oliva
 Industrie Service Manager

Ulteriori informazioni sono riportate in allegato.
 Si prega vedere le note sul retro.
Further information are enclosed. Please see remarks on reverse.



Italia

ANNEX TO THE EC-TYPE EXAMINATION n° TÜV IT 0948 11 MAC 0022/2 B

1. Scope

Vertical lifting platform intended for use by persons with impaired mobility, affixed to building structures (metallic structures not supplied by the manufacturer of the platform), model "OR04" (trade names: ORION, HE30, HE50)

Vertical lifting platforms are referred to in Annex IV, item 17 of Machinery Directive 2006/42/EC, being "Device for the lifting of persons or of persons and goods involving a hazard of falling from a vertical height of more than three meters".

2. Technical specifications

Trade name:	ORION, HE30, HE50
Rated load:	250 ÷ 400 kg
Maximum suspended load:	900 kg
Maximum number of stops:	6
Maximum travel:	15,1 m
Maximum speed:	0,15 m/s
Drive system:	hydraulic indirect acting
Reeving factor:	2:1
Suspension of the carrier:	2 metallic chains
Type:	Fleyer BL 534

Hydraulic equipment:

Lifting and suspension jacks:

Jack Type	Suspension load [kg]	Platform travel [m]
55	until 900	According to Table 6÷14 of the document n° SCH-OR04
60		
70		



Italia

Machinery (hydraulic unit):

Inside a cabinet installed outside the well or in a dedicated room

Jack Type	Maximum rated flow [l/min]	Maximum electric motor power [kW]	Maximum static pressure [bar]
55	10,7	1,8	In accordance with the tables 6÷14 of the document n° SCH-OR04
60	12,7	2,2	
70	17,3	2,2	

Guide system:

Cold drawn steel guide rails complying with ISO 7465, type T70 - 2/A (70 x 70 x 8 mm)

Maximum distance between rail fixings: 1600 mm

Load carrier:

Floor area: up to 1,6 m²

Internal height: ≥ 1900 mm

Frame: see SCH-OR04

Number of entrance: 1 ÷ 3

Control devices: "hold to run" type in the carrier, automatic type at the landing

Protecting devices: entrance protection with

- sensitive edges , or
- photo cells, or
- light barrier

emergency stop

Communication device: Telephone

Auto dialer

Intercom



Italia

Well:

Permanent or metallic structure

Protective device under the platform: manually positioned mechanical blocking device provided with an electric safety device

Protective device above the platform: manually positioned mechanical blocking device provided with an electric safety device

Minimum height of the pit: ≥ 500 mm (mechanical device in active position)

Minimum clear space between the rigid parts in the liftway and the platform: ≥ 300 mm (mechanical device in active position)

Landing doors: manually or automatic hinged doors

Clear width: $500 \div 1000$ mm

Height: ≥ 1800 mm

Material: stainless steel, aluminum, glass and eventually coating

Safety and component devices:

Hinged door locking device:

Prudhomme LR 128 E

Kronenberg DLF 1 EM

Safety device for detecting slackening of chains:

instantaneous safety gear LVT-09

instantaneous safety gear AFV 515-1 BP1

Safety device against free fall of the platform:

Rupture valve integrated in the cylinder

Rupture valve external to the cylinder

Electrical equipment:

Power supply: 230V AC mono phase 50-60Hz

Maximum current 16A

Control circuit supply: 24 V DC



Italia

3. Conditions

The validity of the EC type-examination certificate is subject to review every five years.

In the event that the validity of the EC-type examination certificate is not renewed, the manufacturer shall cease the placing on the market of the machinery concerned.

The applicant shall inform TÜV Italia of all modifications to the approved type. TÜV Italia may or not confirm the validity of the EC-type examination certificate issued.

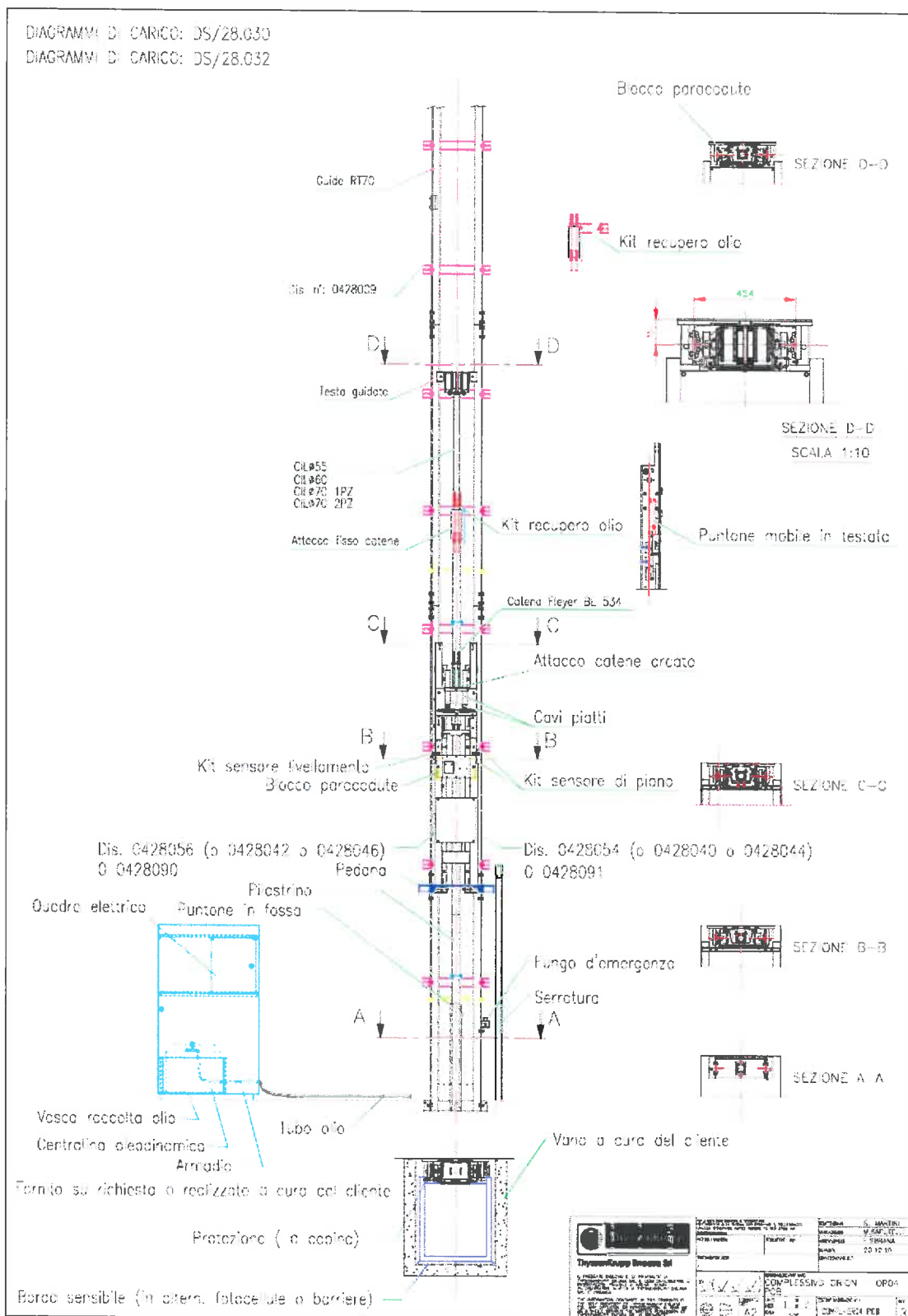
4. Note

The manufacturer shall retain a copy of this certificate, of the technical file and of all the relevant documents for a period of 15 years from the date of issue of the certificate.

This annex is an integral part of the EC-type examination certificate n° **TÜV IT 0948 11 MAC 0022/2 B**.

Sesto San Giovanni, December 18, 2014

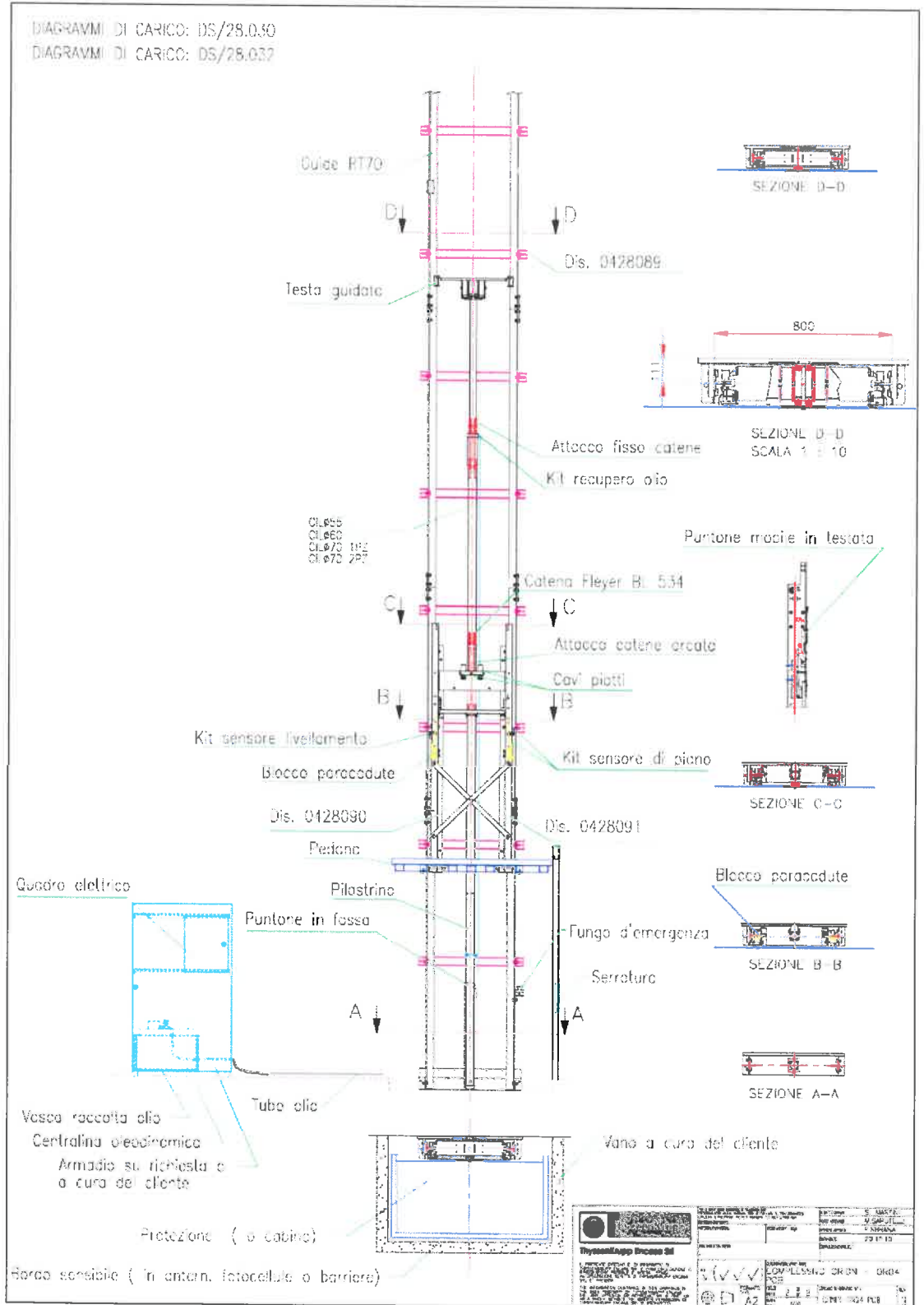
Figure 1 – General drawing - Close Guide





Italia

Figure 2 – General drawing - Large Guide





Italia

Figure 3 – Load diagram

